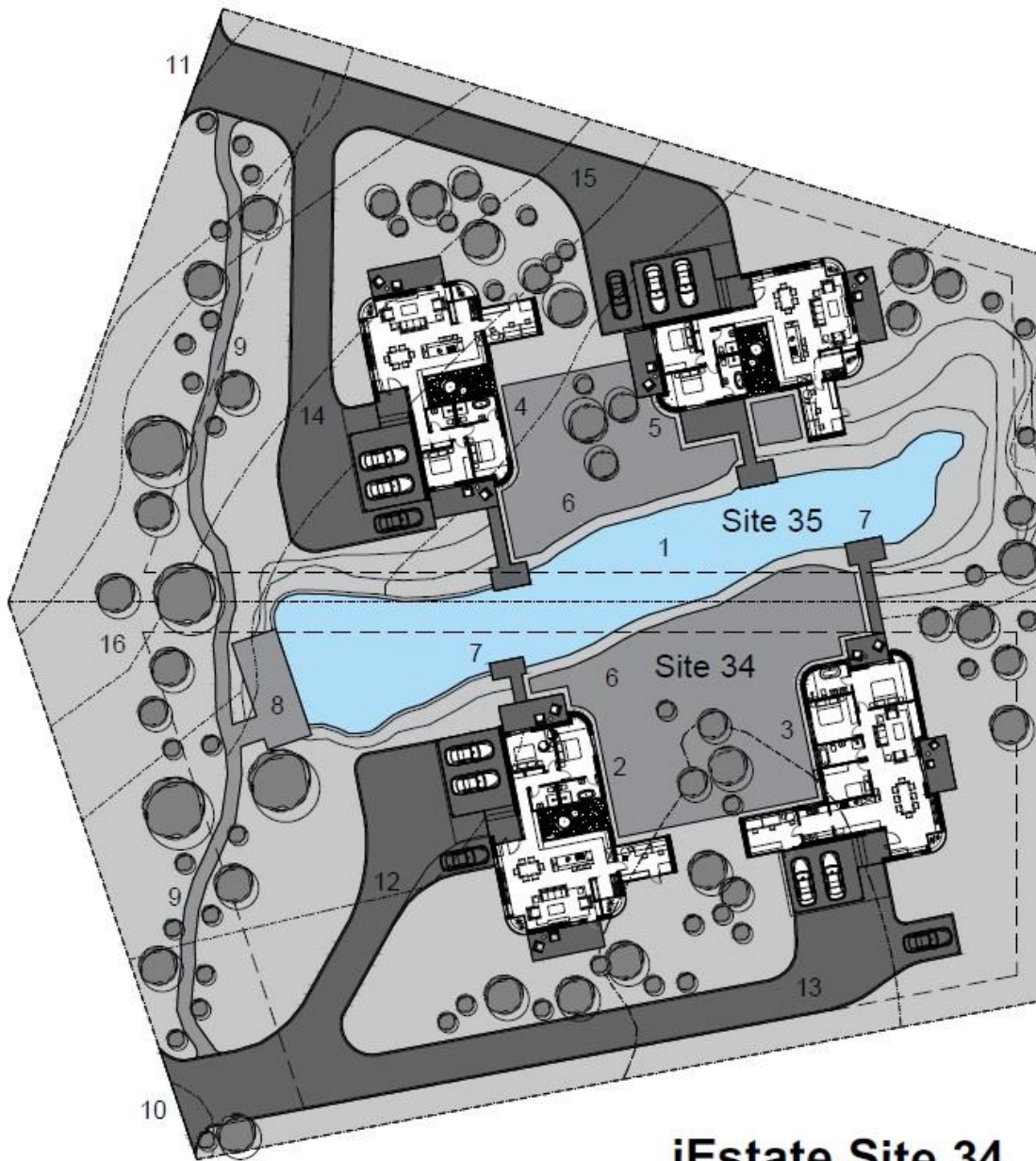




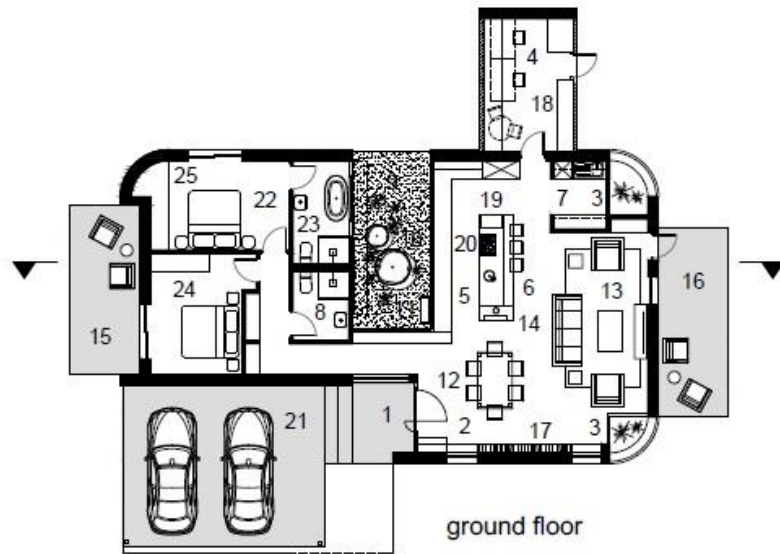
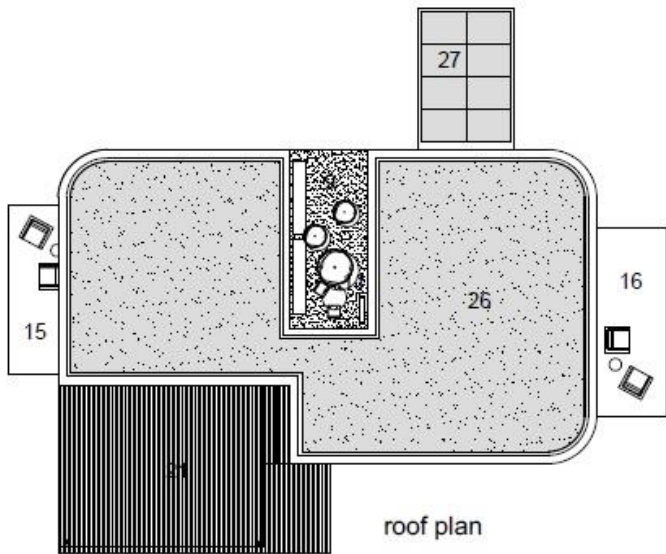
Vaal-de-Grace iEstate 



#### LEGEND GROUND FLOOR

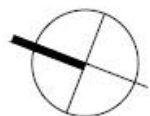
1. WATER FEATURE
2. iESTATE HOUSE HERON
3. iESTATE HOUSE PLOVER
4. FUTURE UNIT 3
5. FUTURE UNIT 4
6. SHARED COURTYARD
7. PONTOON DECKS OVER WATER
8. MAIN PICNIC DECK IN ECO-BELT
9. TRAIL
10. SITE 34 ENTRANCE GATE
11. SITE 35 ENTRANCE GATE
12. HOUSE HERON ENTRANCE DRIVEWAY
13. HOUSE PLOVER ENTRANCE DRIVEWAY
14. FUTURE UNIT 3 ENTRANCE DRIVEWAY
15. FUTURE UNIT 4 ENTRANCE DRIVEWAY
16. ECOLOGICAL BELT

## iEstate Site 34 Site plan



LEGEND GROUND FLOOR

1. ENTRANCE PORTICO
2. ENTRANCE FOYER
3. VERTICAL WINDOW TO GARDEN
4. VERTICAL GARDEN OR HOME OFFICE
5. KITCHEN
6. CENTRE ISLAND
7. SCULLERY / PANTRY
8. COMMUNAL BATHROOM
9. WINDLESS COURTYARD / VERTICAL GARDEN
10. FLOOR TO CEILING GLASS WINDOWS
11. STEPS UP TO ROOF GARDEN
12. DINING ROOM
13. TV LOUNGE/FAMILY ROOM
14. 3-SIDED WOOD BURNING FIRE PLACE
15. MINI ALFRESCO PRIVATE LOUNGE
16. OUTSIDE FAMILY LOUNGE
17. FULL HEIGHT BOOKSHELF LIBRARY
18. WINE FRIDGE WITH GLASS FRONT
19. UNDER COUNTER BAR DRINKS FRIDGE
20. CENTRE ISLAND GAS HOB
21. DOUBLE PERGOLA CAR PORT
22. MASTER BEDROOM
23. MASTER ENSUITE
24. BEDROOM 2
25. FULL HEIGHT BUILT-IN CUPBOARDS
26. ROOF GARDEN (VEGETABLES & HERBS)
27. SOLAR PANELS



north



vaal river



scale bar

**House Heron**  
 2 bedroom unit  
 unit area 125 sqm





view of master bedroom overlooking water feature and outside private alfresco lounge/veranda

iEstate

HOUSE HERON + HOUSE PLOVER





view of vertical gardens and central courtyard space

iEstate

HOUSE HERON + HOUSE PLOVER



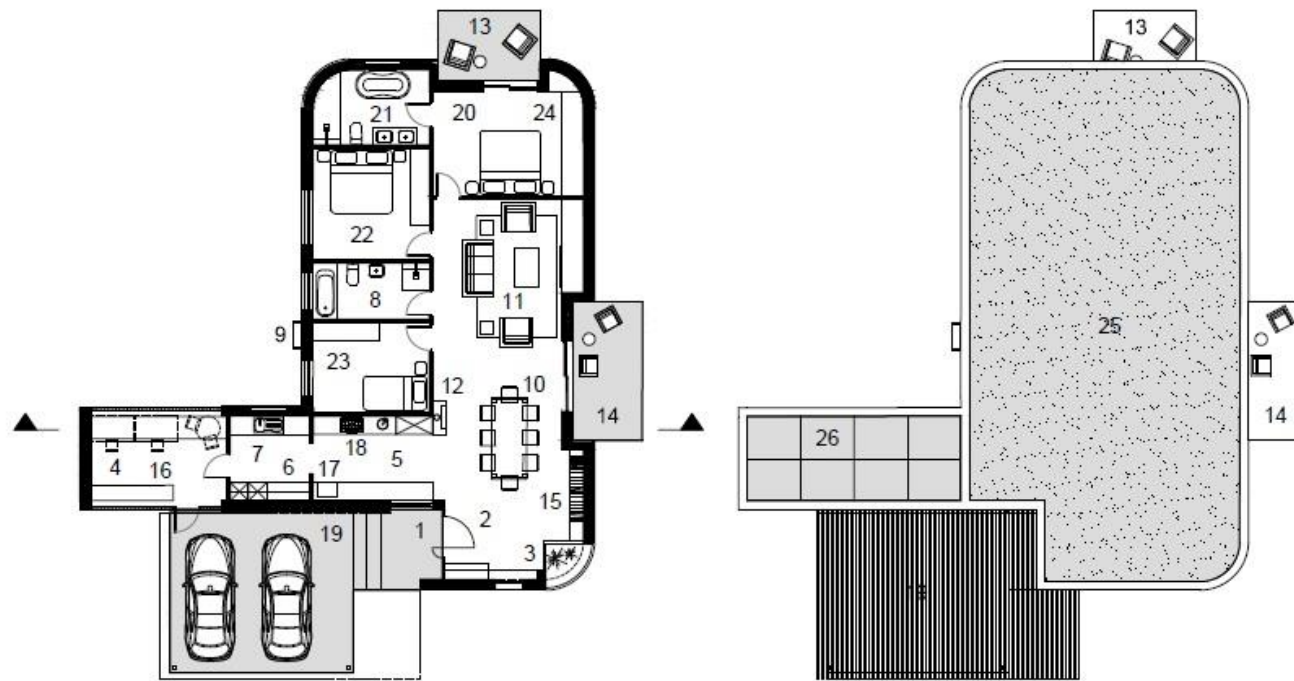


view of pergola carport and master bedrooms overlooking water feature

iEstate

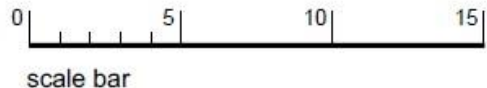
HOUSE HERON + HOUSE PLOVER





LEGEND GROUND FLOOR

- 1. ENTRANCE PORTICO
- 2. ENTRANCE FOYER
- 3. VERTICAL WINDOW TO GARDEN
- 4. VERTICAL GARDEN OR HOME OFFICE
- 5. KITCHEN
- 6. LAUNDRY AREA
- 7. SCULLERY / PANTRY
- 8. COMMUNAL BATHROOM
- 9. STEPS UP TO ROOF GARDEN
- 10. DINING ROOM
- 11. TV LOUNGE / FAMILY ROOM
- 12. WOOD BURNING FIREPLACE
- 13. MINI ALFRESCO PRIVATE LOUNGE
- 14. OUTSIDE FAMILY LOUNGE
- 15. FULL HEIGHT BOOKSHELF LIBRARY
- 16. WINE FRIDGE WITH GLASS FRONT
- 17. UNDER COUNTER BAR DRINKS FRIDGE
- 18. GAS HOB
- 19. DOUBLE PERGOLA CAR PORT
- 20. MASTER BEDROOM
- 21. MASTER SUITE
- 22. BEDROOM 2
- 23. BEDROOM 3
- 24. FULL HEIGHT BUILT-IN CUPBOARDS
- 25. ROOF GARDEN (VEGETABLES & HERBS)
- 26. SOLAR PANELS



**House Plover**  
 3 bedroom unit  
 unit area 150 sqm





view back up at house plover from waters edge

iEstate

HOUSE HERON + HOUSE PLOVER





view from the north west

iEstate

HOUSE HERON + HOUSE PLOVER

